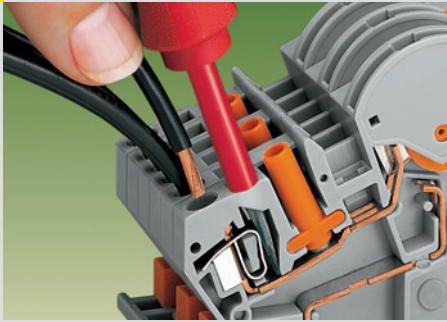


7 Examples of Circuit Configuration

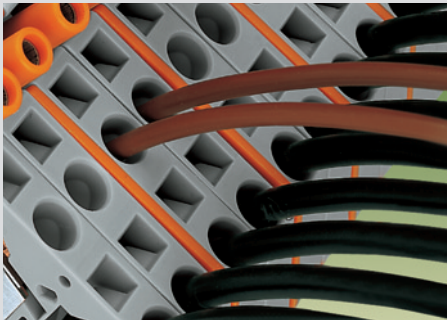
16

CAGE CLAMP® connection



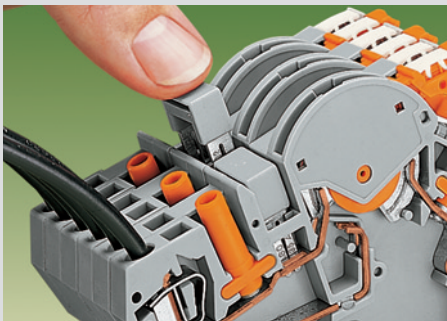
Connection of conductors with screwdriver (5.5 x 0.8) mm

Additional CAGE CLAMP® connection



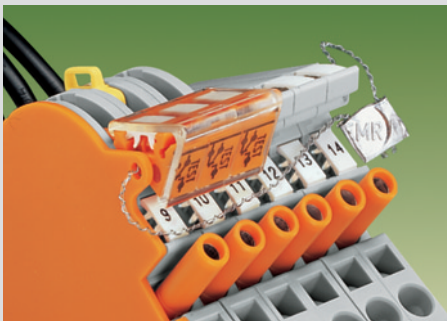
Additional CAGE CLAMP® connection on the side of the measuring instrument
For example: connecting wire commoning chains or applying an external voltage

Commoning



Additional commoning possibility with adjacent jumper.
For example: 'Y' Δ star point

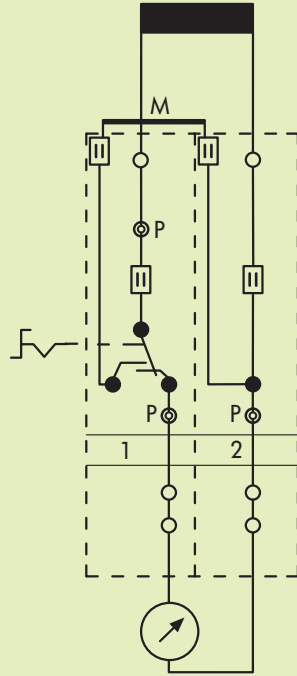
Lock-out seal



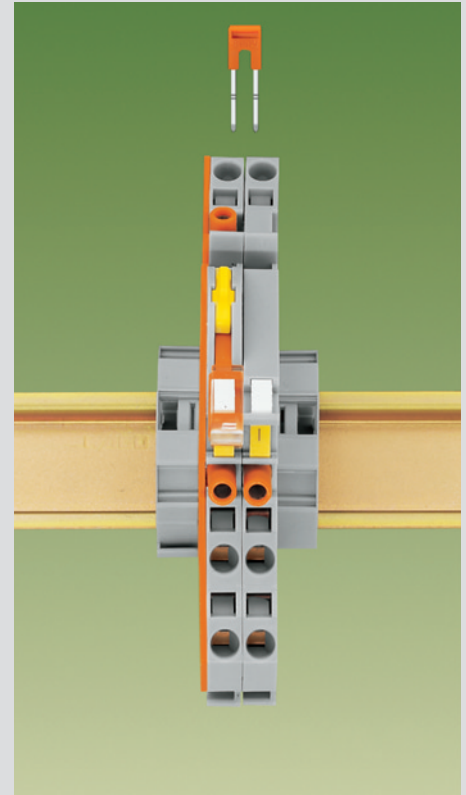
A lock-out seal can be used on the disconnect link in notched position "I"

Measuring set for a single-phase current transformer

(without testing facility for measured value test)



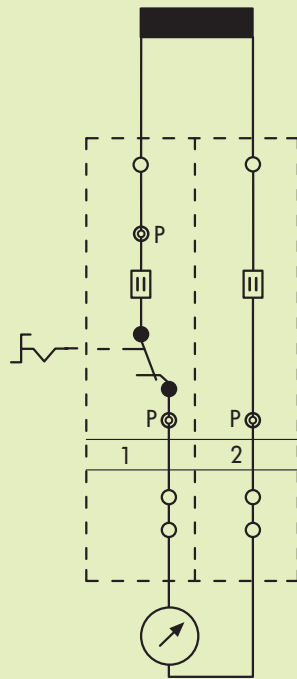
Terminal blocks required:



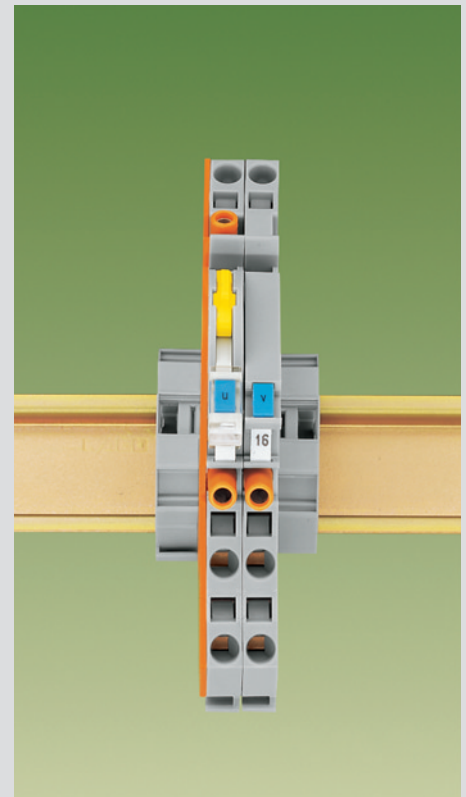
- 1 x disconnect/test terminal block
- 1 x through terminal block
- 1 x jumper, orange
- 1 x end plate, orange
- in addition locking cover, lock-out

282-870
282-865
282-424
282-386

Measuring set for a single-phase voltage transformer



Terminal blocks required:



- 1 x disconnect/test terminal block
- 1 x through terminal block
- 1 x end plate, orange
- in addition locking cover, lock-out

282-860
282-866
282-386